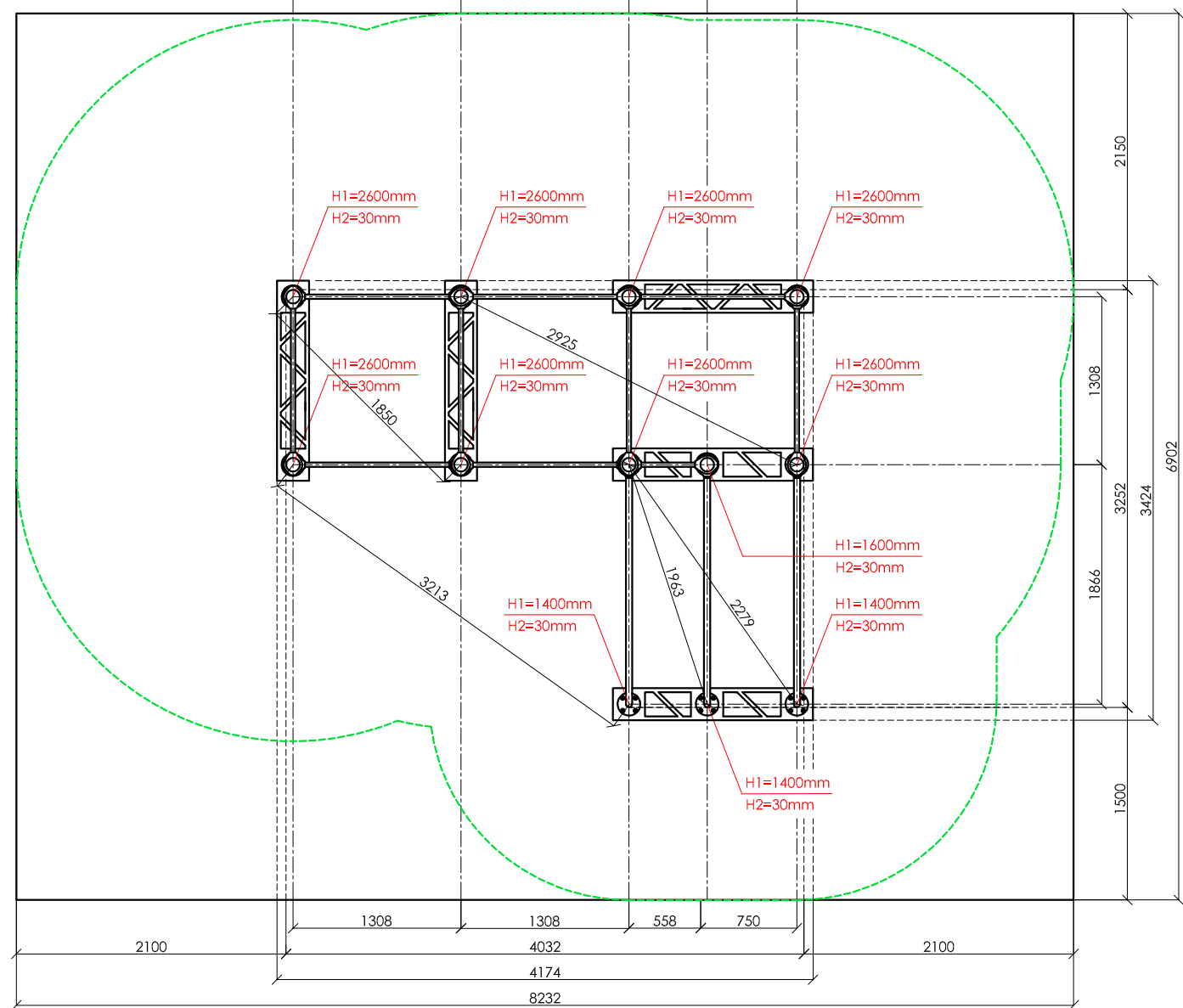
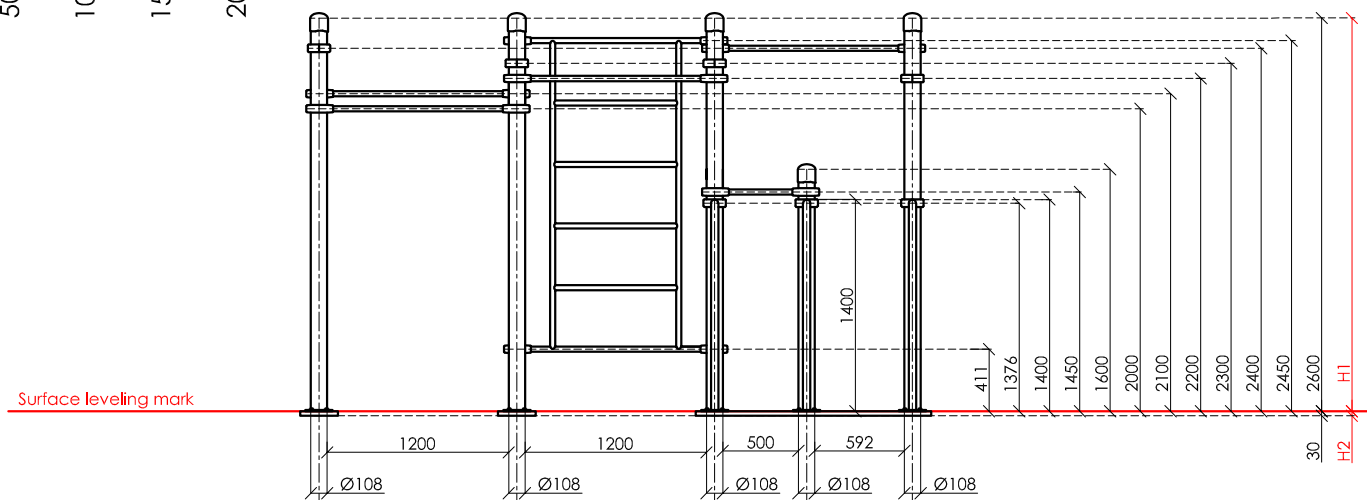
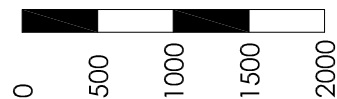


SCALE 1:50



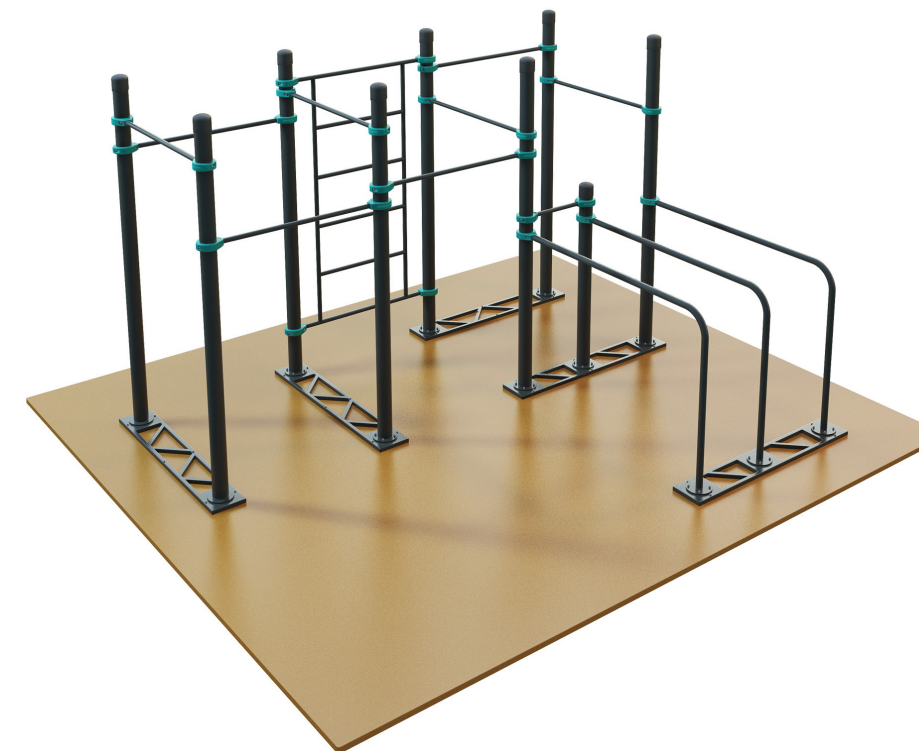
KENGURU PRO

"KENGURU PRO" LTD

Address: Lauteres street 4, Riga, Latvia, LV-1002
 VAT Reg. No. 40103750152
 Bank: A/S Luminor bank, SWIFT: RIKOLV2X,
 Bank Account: LV65RIKO0002930161161
 e-mail: info@kengurupro.eu
 www.kengurupro.eu

D-9

Kenguru INDOOR



The complex consists of nine vertical columns with different height, one crossbar 500 mm in length, eight crossbars 1200 mm in length, three curved bars and Swedish wall. Height of the Swedish wall – 2073 mm, width – 1200 mm. The distance between the crossbars of the Swedish wall – 407 mm. The distance between the curved bars is 608 and 700 mm accordingly. The horizontal surface of bars is 1590 mm in length. Bars are curved on one side at the angle of 90 degrees and create the parallel bars at the height of 1400 mm from the foundations. Construction is secured together with siluminium clamps. Complex can be ordered on stability plates or simply on flanges that must be screwed to the ground.

Technical information

width:	3424 mm (3252 mm without stability plates)	
height:	2680 mm (2650 mm without stability plates)	
length:	4174 mm (4032 mm without stability plates)	
largest part:	2650 mm	
weight:	452,8 kg (363,7 kg without stability plates)	
floor space required	8232 x 6902 mm	
pipe measurements:	diameter:	wall thickness:
	108 mm	3.2 mm
	48,3 mm	3.2 mm
	33,7 mm	3.2 mm
metal parts:	steel, galvanized, powder coated RAL 7016 (anthracite grey)	
metal clamps:	siluminium, powder coated, RAL 5018 (turquoise blue)	
bolts for metal clamps	stainless steel, Pin Hex Button Head Security bolts M10	
max. free fall height:	< 2400 mm	possible underground see DIN 79000:2012-05 Tab.2 or installation instructions
user height:	> 140 cm	
maximum user weight:	130 kg	
certificates:		